

DNP

Photo Imaging

DIGITAL PHOTO PRINTER

DNP Printers

Macintosh OS X

Driver User Guide

Acknowledgments

What's New?

Using Your DS Series Printer for the Macintosh Computer

Exploring the Control Panel	3
ImageSettings	3
ColorSettings	4
Changing the ICC Profiles	5
Advanced	6
SupplyLevels	7
Accessing the Panels from the Printers window	8

Acknowledgments

The information contained in this document represents the current view of DNP Imagingcomm America Corp. on the issues discussed as of the date of publication. Because DNP Imagingcomm America Corp. must respond to changing market conditions, it should not be interpreted to be a commitment on the part of DNP Imagingcomm America Corp. DNP Imagingcomm America Corp. cannot guarantee the accuracy of any information presented after the date of publication.

This document is for informational purposes only.

DNP Imagingcomm America Corp. MAKES NO WARRANTIES, EXPRESSED OR IMPLIED, AS TO THE INFORMATION IN THIS DOCUMENT.

Complying with all applicable copyright laws is the responsibility of the user. Without limiting the rights under copyright, no part of this document may be reproduced, stored in or introduced into a retrieval system, or transmitted in any form or by any means (electronic, mechanical, photocopying, recording, or otherwise), or for any purpose, without the express written permission of DNP Imagingcomm America Corp..

DNP Imagingcomm America Corp. may have patents, patent applications, trademarks, copyrights, or other intellectual property rights covering subject matter in this document. Except as expressly provided in any written license agreement from DNP Imagingcomm America Corp., the furnishing of this document does not give you any license to these patents, trademarks, copyrights, or other intellectual property.

DNP Imagingcomm America Corp. • 4524 Enterprise Dr. NW • Concord, NC 28027 • USA

© 2000-2015 DNP Imagingcomm America Corp. All rights reserved.

What's New?

The following is a list of the new features in this release:

- ☐ **DS620/DS620A Support:** The Mac driver now supports the new DNP DS620/620A printer.
- ☐ **6x9 Media Support:** For DS620/620A printers only. All media prints sizes are supported (6x9, 4.5x6, (4.5x6)x2)
- ☐ **Ribbon Rewind Support:** For DS620 printers only. Supports the ribbon rewind feature that is offered with this printer.
- ☐ **iSerial Tool:** DS620/620A printers only. This tool activates the iSerial feature in the printer firmware that corrects known issues with the Mac printer driver. The iSerial tool and instruction for installing it can be found on the DNP Imaging Europe website: <http://www.dnpphoto.eu> (in the MAC driver package).

Using Your DS Series Printer for the Macintosh Computer

After installing your driver, you can use the DS620, DS40, DS620A, DS80, DS80D, or RX1 to print from your computer.



Note

The printer options screen may change slightly depending on the program from which you are printing. Graphic design programs like *Photoshop* or *Illustrator* may have extra settings which are not included in the examples below.



Attention

The DS40, DS80, DS620, and RX1 printer control panels are all similar, but will present different sets of paper sizes for each respective printer.

Exploring the Control Panel

From the **Printer Settings** drop-down menu (8), select the **DNP Printer Features** option. By clicking the **Color** or **Image** buttons, you can toggle between the **Color** and **Image** control panels.

Image Settings

Use the table below to identify the settings available on the image table.



NUMBER DESCRIPTION

1	Selected Printer*
2	Preset Selection
3	Copies
4	Duplex (Two-Sided) Setting ⁺⁺
5	Print Pages: all/selection
6	Paper Size*
7	Paper Orientation
8	Printer Settings
9	Preview Window
10	Overcoat type: Glossy/Matte
11	Resolution (300x300 dpi - DO NOT CHANGE)
12	Paper Feed (Sheet option is for Duplex Only.)
13	Brightness
14	Contrast
15	Gamma
16	Sharpness
17	Overcoat Duplex Setting ⁺⁺
18	Enable Adjustments

*Selecting a different printer, such as the DS80 or DS80D or RX1, changes some of the options (paper size).

⁺⁺Only available with duplex printers.

Color Settings

Use the settings on the **Color** panel to change any color attributes in your images. Any changes you make are applied to all images that are printed during that print session. Changes are saved between sessions and can be altered at any time.



NUMBER DESCRIPTION

1	Select Printer*
2	Preset Selection
3	Copies/Collated
4	Duplex (Two-Sided) Setting ⁺⁺
5	Print Pages: all/selection
6	Paper Size
7	Paper Orientation
8	Printer Settings
9	Preview Window
10	Saturation levels
11	Color Controls (Red/Green/Blue)
12	Overcoat Duplex Setting ⁺⁺

*Selecting a different printer, such as the DS40, changes some of the options (paper size, duplex) accordingly.

⁺⁺Only available with duplex printers

Changing the ICC Profiles

Use the following procedure to change the ICC profiles assigned to your printer.

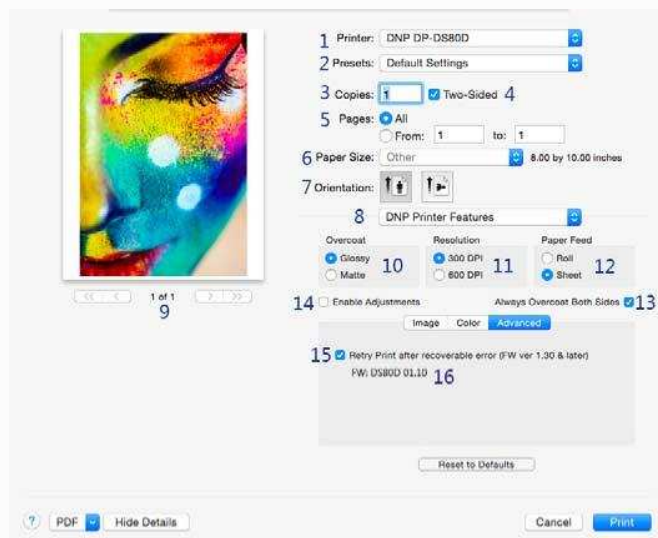
1. From Finder, select **Applications** and then select **Utilities**.
2. Select **ColorSync Utility**.
3. Click the **Devices** header.
4. Select the **DNP** printer for which you wish to change the ICC profile.
5. From the **Current Profile** drop-down menu, select **Other**.



6. Select the desired ICM file.
7. Click **Open**.
8. The new ICC profile is now displayed.

Advanced

By clicking the Advanced button, you can turn on a feature to re-print the last photo if the media runs out during printing. (Available only with printer firmware version 1.30 or higher)



NUMBER DESCRIPTION

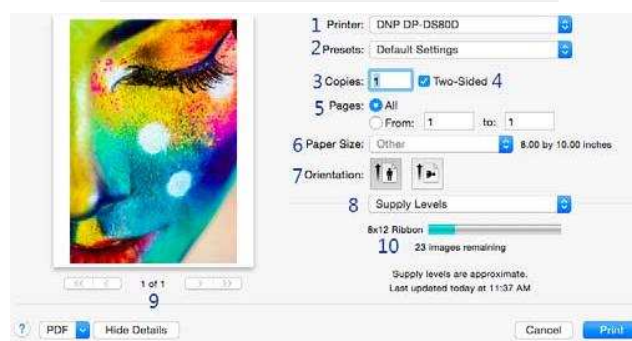
1	Selected Printer*
2	Preset Selection
3	Copies
4	Duplex (Two-Sided) Setting ⁺⁺
5	Print Pages: all/selection
6	Paper Size*
7	Paper Orientation
8	Printer Settings
9	Preview Window
10	Overcoat type: Glossy/Matte
11	Resolution (300x300 dpi - DO NOT CHANGE)
12	Paper Feed (Sheet option is for Duplex Only.)
13	Enable Adjustments
14	Overcoat Duplex Setting ⁺⁺
15	Retry Printing last print after error
16	Firmware version

*Selecting a different printer, such as the DS40, changes some of the options (paper size, duplex) accordingly.

⁺⁺Only available with duplex printers

Supply Levels

Change the printer settings drop-down menu to **Supply Levels** to check how many ribbon panels are left on the currently selected printer.



NUMBER DESCRIPTION

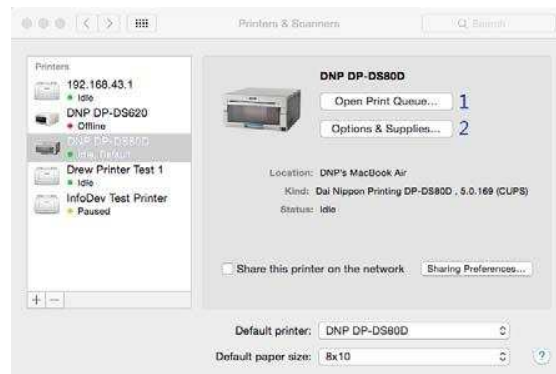
1	Select Printer*
2	Preset Selection
3	Copies/Collated
4	Duplex (Two-Sided) Setting ⁺⁺
5	Print Pages: all/selection
6	Paper Size
7	Paper Orientation
8	Supply Levels
9	Preview Window
10	Ribbon Remaining Estimate

*Selecting a different printer, such as the DS40, changes some of the options (paper size, duplex) accordingly.

⁺⁺Only available with duplex printers

Accessing the Panels from the Printers window

If you are viewing the printer properties, use these options below.

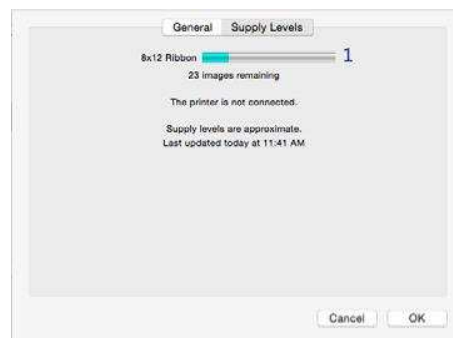


NUMBER DESCRIPTION

1 Opens the print queue.

2 Opens a new window with supply level information and driver version information.

Pressing the **Options & Supplies** button opens the following screen:



NUMBER DESCRIPTION

1 Approximate Ribbon Prints Remaining

DNP Imagingcomm America Corporation